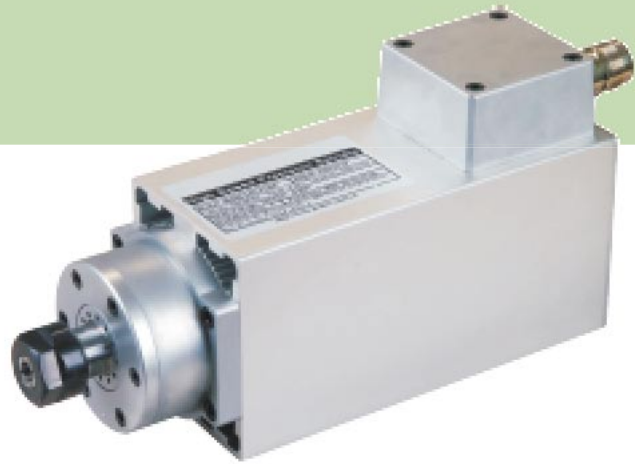


Work Spindle Drive HSAW 2.2 SKC-E

Features

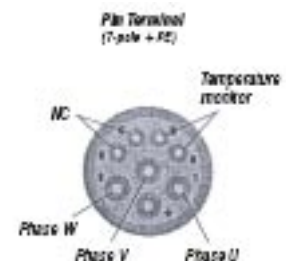
- Robust two-pole AC motor (asynchronous motor)
- Rectangular design, protection class IP54, isolation class F
- Steel bearing plates on A-side and B-side
- Special shaft for holding drills and milling tools
- Nominal output 2.2 kW (S6-40% mode)
- Speed range Ø3,000 - Ø24,000 rpm
- Manual tool change
- Clamping range 3 mm - 12.7 mm
- Self-ventilation on B-side
- Speed control by frequency converter
- Spindle bearing: 2 bearings on A-side
- 2 bearings on B-side



Technical Information

Description	Torque at nominal speed 24,000 rpm	Speed rpm	Poles	Nominal voltage	S6 = 40% Nominal power	1/100 mm concentricity	Weight kg
MAV 2.22S	0.89 Nm	3,000 to 24,000	2	3 x 220 V	2.2 kW	1.0	9.5

Motor Connection



Dimensions

